



**Phase 3**

# **Clinical trials now enrolling**

**Committed to people living with cancer**

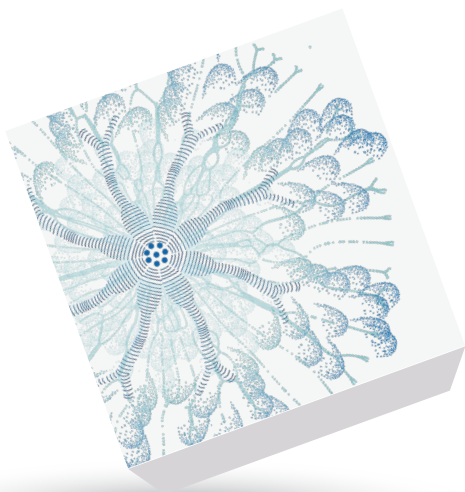


Scan to view Clinical Trials Now Enrolling  
on a mobile device

The information contained in this brochure is educational in nature and is intended for U.S. healthcare professionals.

*Last updated 05/25*

BREAST



## Adjuvant TNBC

### ASCENT-05<sup>a</sup>

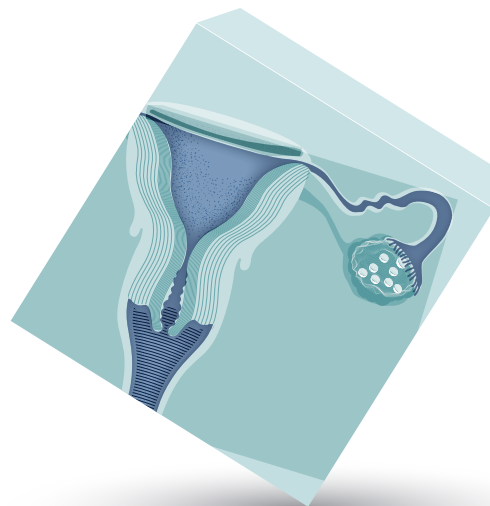
Phase 3 randomized, open-label study of adjuvant sacituzumab govitecan and pembrolizumab versus treatment of physician's choice in patients with TNBC who have residual invasive disease after surgery and neoadjuvant therapy



NCT05633654



GYN



## 2L+ mEC

### ASCENT-GYN-01<sup>b</sup>

Phase 3 randomized, open-label study of sacituzumab govitecan versus treatment of physician's choice in patients with endometrial cancer who have received prior platinum-based chemotherapy and PD-(L)1 immunotherapy



NCT06486441



*Scan QR codes for study designs*

**The safety and efficacy of these investigational agents and/or uses have not been established. There is no guarantee that they will become commercially available.**







## 1L mNSCLC, PD-L1 TPS $\geq 50\%$ EVOKE-03<sup>c</sup>

Phase 3 randomized, open-label, multicenter, active-comparator-controlled clinical study of pembrolizumab in combination with sacituzumab govitecan versus pembrolizumab monotherapy as first-line treatment in patients with PD-L1 TPS  $\geq 50\%$  mNSCLC



NCT05609968



## 2L ES-SCLC EVOKE-SCLC-04

A global, multicenter, randomized, open-label, Phase 3 study of sacituzumab govitecan versus standard of care in previously treated patients with ES-SCLC



NCT06801834



## 1L mNSCLC, regardless of PD-L1 expression status STAR-121<sup>d</sup>

A randomized, open-label, Phase 3 study to evaluate zimberelimab and domvanalimab in combination with chemotherapy vs pembrolizumab with chemotherapy for the 1L treatment of patients with mNSCLC with no EGFR or ALK genomic tumor aberrations



NCT05502237

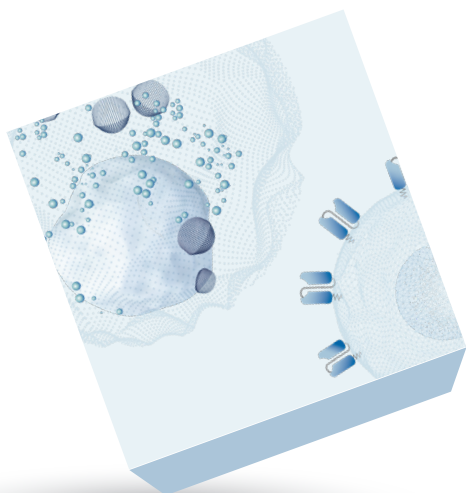


*Scan QR codes for study designs*

**The safety and efficacy of these investigational agents and/or uses have not been established. There is no guarantee that they will become commercially available.**



# CELL THERAPY



## 1L high-risk LBCL ZUMA-23

Adaptive Phase 3, randomized, open-label, multicenter study to compare the efficacy and safety of axicabtagene ciloleucel versus standard of care therapy as first-line therapy in patients with high-risk LBCL



NCT05605899

## R/R MM iMMagine-3<sup>e</sup>

Phase 3, randomized, open-label study to compare the efficacy and safety of anitocabtagene autoleucel versus standard of care therapy in patients with R/R MM



NCT06413498

*Scan QR codes for study designs*

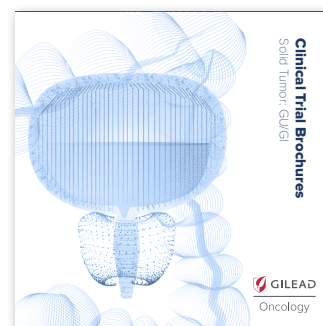
**The safety and efficacy of these investigational agents and/or uses have not been established. There is no guarantee that they will become commercially available.**

# CLINICAL TRIAL BOOKLETS

*Scan clinical trial booklet QR codes to view brochures on a mobile device.*



BREAST/GYN



GU/GI



THORACIC



HEMATOLOGICAL  
MALIGNANCIES





<sup>a</sup>In collaboration with Alliance Foundation Trials, LLC and the National Surgical Adjuvant Breast and Bowel Project Foundation, Inc.

<sup>b</sup>In collaboration with the Gynecologic Oncology Group (GOG) Foundation, the European Network of Gynaecological Oncological Trial Groups (ENGOT) and the Asia-Pacific Gynecologic Oncology Trials Group (APGOT).

<sup>c</sup>In collaboration with Merck.

<sup>d</sup>In collaboration with Arcus Biosciences.

<sup>e</sup>In collaboration with Arcellx, Inc.

**1L**, first line; **2L**, second line; **ALK**, anaplastic lymphoma kinase; **EGFR**, epidermal growth factor receptor; **ES-SCLC**, extensive stage small cell lung cancer; **GI**, gastrointestinal; **GU**, genitourinary; **GYN**, gynecological; **LBCL**, large B-cell lymphoma; **m**, metastatic; **MM**, multiple myeloma; **NCT**, national clinical trial; **NSCLC**, non-small cell lung cancer; **PD-(L)1**, programmed cell death (ligand) 1; **R/R**, relapsed/refractory; **TNBC**, triple-negative breast cancer; **TPS**, tumor proportion score.



GILEAD and the GILEAD logo are trademarks of Gilead Sciences, Inc.  
KITE and the KITE logo are trademarks of Kite Pharma, Inc. All other trademarks referenced herein are the property of their respective owners.

©2025 Gilead Sciences, Inc. All rights reserved. MA-NON-NA-US-00316 05/25